

KINBRACE ANNUAL REPORT

2016-2017

Local Focus, National Influence



Photo: Mark Janousek

Welcoming asylum seekers.
Personally.
Across Canada.

"This year, three million asylum seekers sought safety globally. Of these, more than 20,000 arrived in our country. I am grateful that some of them received a personal welcome, finding housing and support through the Kinbrace community.

I've been humbled and transformed serving on Kinbrace's Board, seeing how our front line team welcomes Canada's future citizens: courageous individuals who have risked more than any of us can imagine in their quest for refugee protection. This year, Kinbrace enriched its offers to refugee claimants arriving in Canada, including developing the new *Ready for My Refugee Hearing* resource portal. As you read this Annual Report, I invite you to celebrate our shared commitment to a personal welcome – a welcome that transforms all of us."

—Chris Wiesinger, Chair, Board of Directors

Board Directors 2016-2017

Chris Wiesinger | Beth Glick | Luke Evanow | Martha Koehn | Lesley Stalker

Photo: Mark Janousek

Kinbrace Vision

For each refugee claimant:

A world of welcome

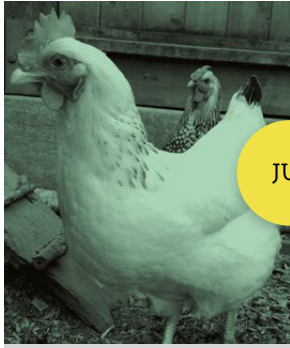
A community of belonging

A life of opportunity

2016

MAY

Kinbrace's 18-month FreeForm journey facilitated by World Vision Canadian Programs culminates in a 3-year strategic plan and a strong leadership team.



JUL

First egg from the backyard hens!

18th Anniversary for Kinbrace marked by the welcome of the 500th refugee claimant resident.

SEP

First-ever Annual Report completed in time for our September Annual General Meeting.

NOV



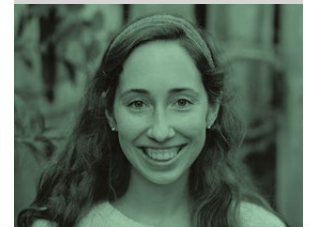
Welcome the *Stranger* educational series launches in partnership with Journey Home Community Association.

JAN

Wellness Program launches funded pilot project to address mental health among refugee claimants at Kinbrace.

MAR

Farewell to Tatum McLeod after 20 months living as Host in the Kinbrace community.



Welcoming refugee claimants through Kinbrace: a few key events 2016–2017

JUN

Sixty participants enjoy the 13th Annual Kinbrace Camping Trip hosted at Daybreak Camp, Anvil Island.



Partner refugee claimant serving agencies Inland Refugee Society, SOS, and VAST move into new ISSofBC Refugee Welcome Centre Vancouver, BC.



Raúl Gatica joins the staff team to lead *Beyond Refuge*, connecting refugees with supportive communities in Metro Vancouver.

AUG

OCT

Bocci Design gives \$98,000 to welcome asylum seekers, the largest corporate gift Kinbrace has ever received.

DEC

Kinbrace's Immigration Detention Monitoring project with UNHCR wraps up in BC.

FEB

"How do we keep Kinbrace's Welcoming Community healthy and sustained?" External consultant Alice Sundberg listened and reported back with recommendations.

APR

Grieving the death of friend, advocate, and supporter Louise Bentall, (Hawthorne Foundation).

2017

Our Core Values

Welcome | Trust | Mutual transformation | Celebration | Prayer

Our Programs

Housing | Integration | Wellness | Access to Refugee Protection



Photo: Mark Janousek

Housing means safety, especially for the 28 million children forced into homelessness through conflict and persecution. These two sisters (the baby was born while the family lived at Kinbrace) are flourishing.

HOUSING

We continued to witness record numbers of people forcibly displaced in 2016: over 65 million globally. When asylum seekers arrive in Canada, many are homeless.



GOAL

30 newly arrived refugee claimants access transitional housing at Kinbrace and 30 Kinbrace residents move into permanent, appropriate housing.



STATS

30 refugee claimants moved into Kinbrace and 26 Kinbrace residents moved out.



QUOTE

"When I arrived from my country, I had no place to live. I was terrified. I could not see how, one day, our family would be renting our own home. I am thankful."

**—Aaqil, from Afghanistan
(name changed)**



UNIQUE
FACT

In 2016, 1360 refugee claimants arrived to British Columbia, compared to 1100 in 2015. There are just 17 dedicated refugee claimant emergency housing rooms in BC.



LOCAL
FOCUS

The Kinbrace community launched a strategic planning process in April 2017, casting a vision of Kinbrace-model housing for refugee claimants across the Lower Mainland.

INTEGRATION

Fear, confusion, communication barriers, and cultural complexities can isolate asylum seekers in the first weeks and months in Canada.



GOAL

30 refugee claimants living at Kinbrace integrate into Canadian systems amidst networks of community and support.



STATS

30 refugee claimants and 52 former residents built relationships through such events as Kinbrace's weekly meal, Thanksgiving, Christmas, Eid celebrations, and various outdoor activities.



QUOTE

"Me encanta brincar en el trampolin con los niños de la vecindad;"
(I love jumping on the trampoline with other children in the neighbourhood!)
—6 year-old Juanito (name changed)



UNIQUE FACT

Within the Kinbrace community, residents can ask for help on an immigration form, walk out the gate to an appointment with accompaniment, pick leaves from the grape vines to make dolma, or collect fresh-laid eggs from the six backyard hens.



LOCAL FOCUS

Beyond Refuge* launched in August 2016 to connect refugees moving on from Kinbrace with supportive communities in Metro Vancouver.

** Partial funds for this project were provided by the United Way of the Lower Mainland*



Photo: Mark Janousek

Over the past year, we've enjoyed Kurdish Iraqi food at many of our Tuesday community meals.





Photo: Mark Janousek

Celebration, a Kinbrace core value, honours the losses and longings of people seeking refugee protection. Affirming each other's humanity is a step toward wellness in the otherwise disorienting and chaotic landscape of forced displacement.

WELLNESS

Refugee claimants often experience significant anxiety as they navigate complicated bureaucratic systems and meet basic needs while coping with loss and change.



GOAL

35 refugee claimants access the Wellness Program, leading to an experience of increased mental wellbeing, safety and stability, and economic opportunity.



STATS

95% of Wellness Program participants demonstrated a decrease in acute psychological symptoms (January to May 2017).



QUOTE

"The suffering I experience as a refugee claimant in Canada is overwhelming and immobilizing. The Wellness Program helps me cope with the refugee claim process, face the challenges of being alone in Canada, and grow hope."

–Wellness Program Participant



UNIQUE FACT

Jennifer Grolow joined the Wellness Program this year as the *Wellness Program Coordinator* to offer non-clinical therapeutic activities for Kinbrace residents.



NATIONAL INFLUENCE

The Wellness Program is innovative in Canada; not only is it specifically tailored to refugee claimant mental health concerns, it is offered in the context of supportive community.

ACCESS TO REFUGEE PROTECTION

For a person seeking refugee protection in Canada, the process of making a claim and preparing for their refugee hearing can be bewildering and overwhelming.



GOAL

6,000 refugee claimants across Canada experience orientation to the refugee claim process.



STATS

- 601 refugee claimants and 82 service providers attended Kinbrace-facilitated READY Tours in Vancouver, Calgary, Edmonton, Winnipeg.
- Of the 23,350 refugee claimants who claimed asylum in Canada in 2016, an estimated 40% had access to the Refugee Hearing Preparation Guide and a READY Tour in their language.
- *READY For My Refugee Hearing* www.refugeeclaim.ca had 3106 site visits in its first 3 months.



QUOTE

"The READY Tour was engaging and informative. I became familiar with the atmosphere of the refugee hearing room and feel more prepared."

—READY Tour participant



UNIQUE FACT

A Sorani Kurdish translation of the *Refugee Hearing Preparation Guide* was completed in January 2017 to educate increasing numbers of Kurdish Iraqis seeking asylum in Canada.



NATIONAL INFLUENCE

Collaborating with government and not-for-profit organizations across Canada, Kinbrace worked to increase access to refugee protection for asylum seekers through READY Tours and the Preparation Guide.



Photo: Andrea Armstrong

Coordinated by Kinbrace in collaboration with partners across the country, *READY For My Refugee Hearing* was launched in early 2017 to empower every person seeking refugee protection in Canada to be as prepared as possible for their refugee hearing.

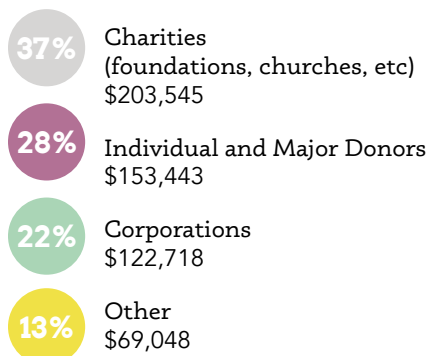
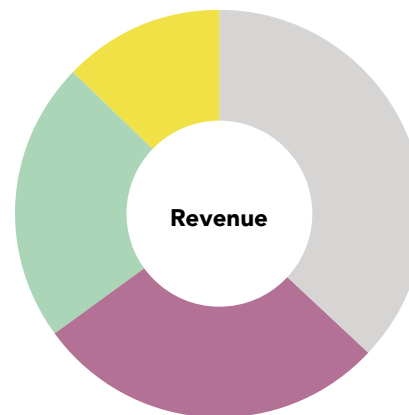
Visit this new resource at www.refugeeclaim.ca.

"Thank you, donors and funders,
for the consistent, heart-felt
welcome you've provided to
refugee claimants this year
through your generous giving."

—Loren Balisky, Executive Director

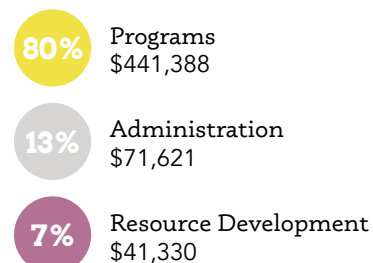
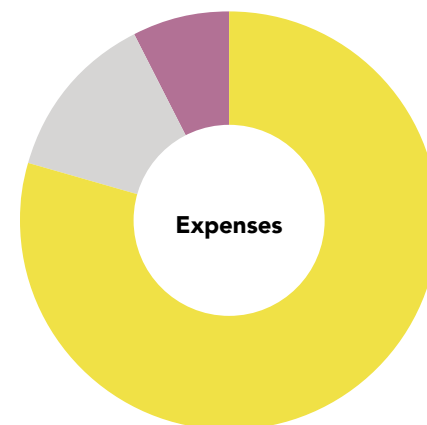
FINANCIAL SUMMARY

2016-2017



Total **\$548,754***

**This is a 19% decrease compared to last year's revenue.*



Total **\$554,339**

Kinbrace's fiscal year is May–April.



REFUGEE HOUSING & SUPPORT

**The Kinbrace community
welcomes refugee claimants
with housing, education, and
support.**

kinbrace.ca

21732–1424 Commercial Drive | Vancouver BC | V5L 5G3
Office: 604-255-9691 | E-mail: info@kinbrace.ca

Kinbrace Community Society is incorporated in
British Columbia (# S0058365) and charitably registered
by Canada Revenue Agency (# 80276 4209 BC0001).